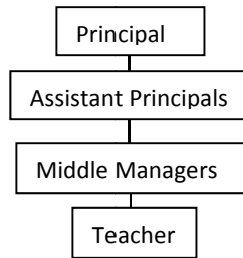




# Mount St Benedict College

## Role The Mount St Benedict Teacher

### Reporting line:



*The College values of Pax, Hospitality and Stewardship underpin all that we do at Mount St Benedict College and are brought to life through relationships, actions and events within this College community.*

### Role Purpose

Mount St Benedict teachers are professional educators whose work is guided by the Gospel, enunciated in the College's Mission and Vision Statement:

*Inspired and informed by our Good Samaritan heritage, Mount St Benedict College educates young women in a Christian community where all are encouraged to contribute with gifts given to them to make a difference in the world.*

Each Teacher contributes to the work of the curriculum, pastoral and mission teams which are guided by the Good Samaritan Charism and Benedictine spirituality. In partnership with parents and the Catholic community the teacher seeks to guide and form their students in the likeness of Christ through their words and example. In this way, all members of the College community share actively in God's mission of hope and liberation.

The Mount St Benedict College teacher develops a deep knowledge and strong sense of each individual student. This knowledge enables the teacher to respond in a holistic way to the social, psychological, spiritual and developmental needs of the student as they work together in the class room, in homeroom and pastoral care, in liturgy and prayer, in reaching out to others, in building community and in exploring other interests.

It is important that teachers see themselves as being in cooperative partnership with parents and the College community, working towards the achievement of the College Strategic Plan. In doing so, the teacher supports the development of the school as a professional learning community focused on maximising learning and life outcomes for students. They are expected to take an active involvement in the general life of the College and carry out other duties as directed by the Principal.

Teachers have an obligation to meet the high standards of professional practice and ethical behaviour required by the College, parents and the profession itself, undertaking this responsibility within the framework of the law.

### Role Accountability

As a Catholic school in the Benedictine tradition, teachers at Mount St Benedict College is expected to provide a rich and supportive learning environment through:

- forming strong and cooperative relationships where students are known, nurtured and challenged in their learning
- creating an atmosphere of confidence and trust among learners
- demonstrating fairness, justice, forgiveness and respect in their relationships with students and colleagues
- bringing a depth of knowledge and contemporary understanding to the learning experiences of students together with parents and the broader community
- demonstrating thoughtful planning of learning experiences to most effectively engage student interest
- exploring deeper meanings associated with learning experiences including matters of faith and spirituality, justice and morality, pax, stewardship and hospitality
- providing timely, regular and meaningful feedback to students and their parents as well as colleagues
- engaging in ongoing learning in their subject disciplines, in pedagogy, faith and spirituality and in adolescent psychology and contemporary issues faced by adolescents

Incorporated within the charism and ethos of the College and those points outlined above, the Mount St Benedict Teacher is expected to be at the level of “Proficient” against seven National Professional Standards for Teachers (AITSL, 2011), encompassed within three domains – Professional Knowledge, Professional Practice and Professional Engagement.

### **Statement of Duties:**

The duties of a teacher at Mount St Benedict College include but are not limited to:

- actively contributing to the Mission of the College through liturgy and prayer, retreats and reflection days, outreach and social justice initiatives and community events
- actively contributing to the Pastoral focus of the College through developing respectful and supportive relationships with students and colleagues at all times as well as mentoring students in homeroom and during Pastoral Care lessons and through contributing positively to a House team
- actively contributing to the Curriculum through the provision of appropriate and relevant subject information in effective and innovative classroom teaching, completion of lesson preparation, programs and registers that reflect the syllabus outcomes of the course, using a range of rich and appropriate student assessment programs and evaluation techniques and ensuring reports are accurate, appropriate and meet College deadlines
- actively promoting student engagement through a range of learning experiences which seek to foster understanding in a context of real world experiences guided by the Gospel and the Charism of the College
- attending meetings as required including but not limited to Staff meetings and Parent Teacher interviews
- completing requirements such as registers and reports in a timely and thorough manner
- actively contributing to community and co-curricular events such as camps and retreats, community days such as MSB Day, Carnivals and activity days
- engaging in reflective practice and ongoing professional learning to enhance their capacity in their subject disciplines, in pedagogy, faith and spirituality, and in adolescent psychology and contemporary issues faced by adolescents
- ensuring that students are appropriately supervised and being diligent in the exercise of duty of care at all times
- complying with all reasonable directions given by a supervisor or Principal and adhere to guidelines concerning the performance of their duties
- ensuring they are conversant with College policies and procedures
- complying with their legal responsibilities including:
  - ensuring administrative requirements associated with classroom teaching and homeroom such as class rolls and attendance are carried out when required and strictly monitored
  - fulfilling mandatory responsibility to notify the Principal of children who are at risk of harm and of any possible allegations of ‘reportable conduct’
  - taking reasonable care for own health and safety and that of other personnel who may be affected by their conduct.

### **Appraisal/Review Conditions**

The Mount St Benedict Teacher will undergo a Performance Review in accordance with College policy. In addition they will in collaboration with the Head of Department, set individual and Department goals on a yearly basis.